



NEHI LIVE! PRESENTS . . .

ACCELERATING INNOVATION IN OBESITY AND DIABETES MANAGEMENT POST-COVID-19

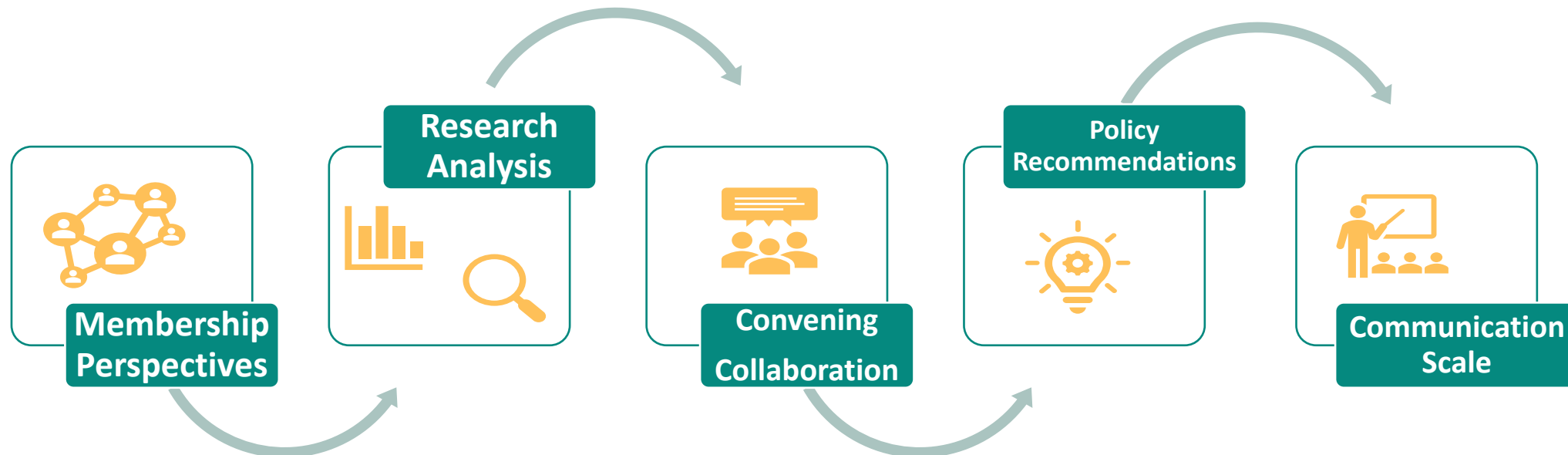
A NEHI Live! Webinar
February 10, 2021



What We Do; How We Work

- **Mission:** advance innovations that improve health, enhance the quality of health care, and achieve greater value for the money spent.
- **Methods:** gather and present research and analysis to build consensus among multiple stakeholders that produces actionable policies and practices

We believe that **shared purpose and thoughtful dialogue** among health care leaders and experts with **different viewpoints** is essential to speeding the **adoption of innovations**



Today's Panel



MURRAY AITKEN
Executive Director,
**IQVIA Institute for Human Data
Science;**
Senior Vice President, IQVIA



ROBERT A. GABBAY,
MD, PhD, FACP
Chief Medical Officer,
American Diabetes Association



JENNIFER SCHNEIDER, MD, MS
*Former Chief Medical Officer and
President,*
Livongo

Moderated by: Tom Hubbard, *VP of Policy Research, NEHI*

Trends in Health

- An obesity pandemic
 - 50% of American adults obese by 2030?
- Rising prevalence of diabetes
 - [10.5% of U.S. population \(2018\)](#)
- Wide disparities
 - Among Black Americans: [47.9% have obesity \(2013-16\)](#), [13% have diabetes \(2018\)](#)
 - Among Hispanic Americans: [44.8% have obesity \(2013-2016\)](#), [13.2% have diabetes \(2018\)](#)

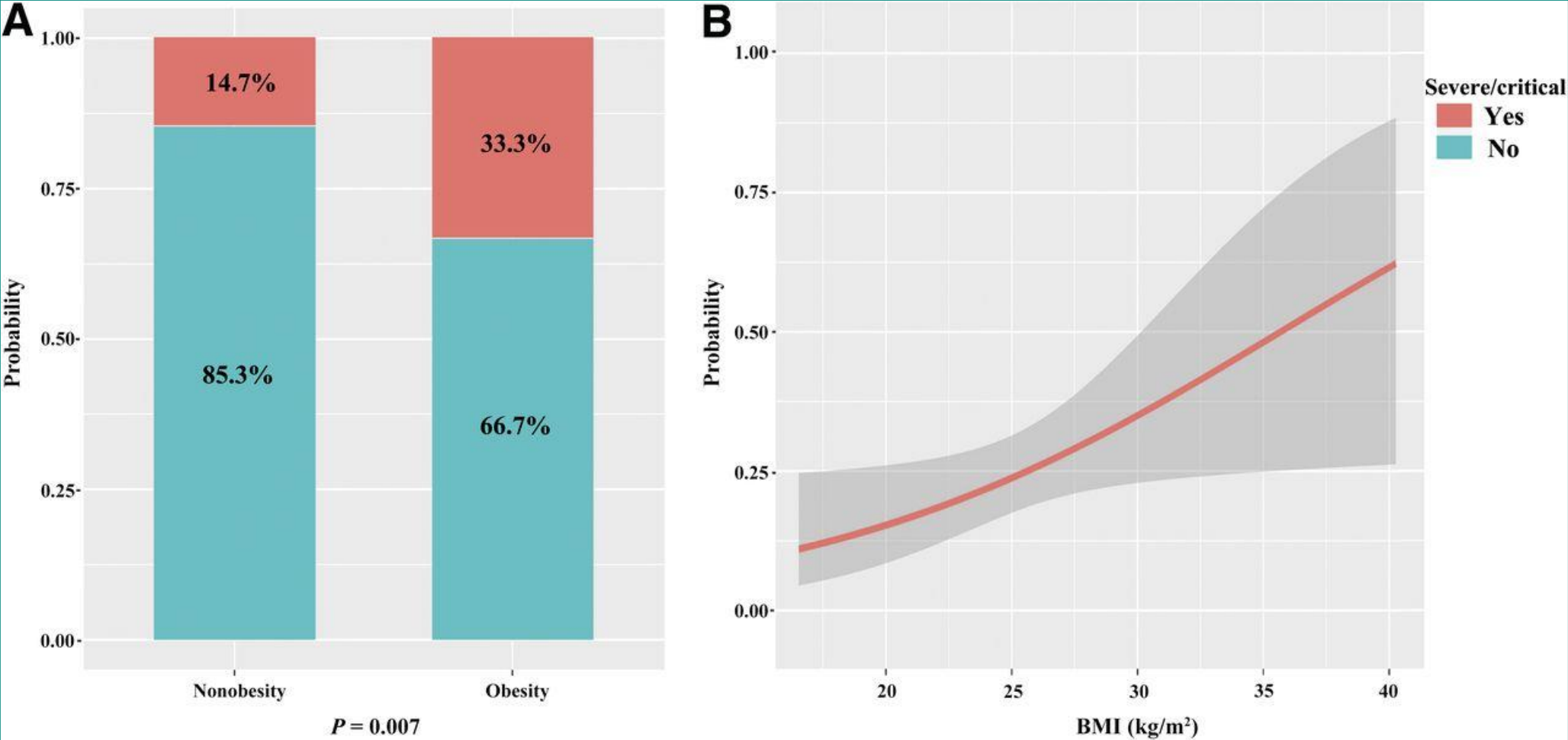
Trends in Clinical Guidance

- Earlier and more intensive treatment of obesity for patients at risk
- Earlier and expanded use of non-insulin medications to treat type 2 diabetes and reduce CV risks

Trends in Innovation

- Virtual care
- Holistic models of primary care
 - Greater focus on social determinants of health
- Diabetes prevention and remission programs
- Lifestyle medicine
- Anti-obesity medication
- Digital health (continuous glucose monitors, insulin pens, insulin pumps)

The Impact of COVID-19



Obesity and Severe/Critical Illness from COVID-19

The Impact of COVID-19

The childhood obesity crisis started before Covid-19. The pandemic has made it much worse.

by [Sam Bloch](#)
01.19.2021, 5:01am

Health

The Counter, January 19, 2021

The Washington Post

Democracy Dies in Darkness

New diabetes cases linked to covid-19

Researchers don't understand exactly how the disease might trigger Type 1 or Type 2 diabetes, or whether the cases are temporary or permanent. But 14 percent of those with severe covid-19 developed a form of the disorder, one analysis found.

By [Erin Blakemore](#)

Feb. 1, 2021 at 1:15 p.m. EST

Centers for Disease Control and Prevention: [COVID-19 Hospitalization and Death by Race/Ethnicity](#)

Updated November 30, 2020

Rate ratios compared to White, Non-Hispanic persons	American Indian or Alaska Native, Non-Hispanic persons	Asian, Non-Hispanic persons	Black or African American, Non-Hispanic persons	Hispanic or Latino persons
Cases ¹	1.8x	0.6x	1.4x	1.7x
Hospitalization ²	4.0x	1.2x	3.7x	4.1x
Death ³	2.6x	1.1x	2.8x	2.8x

The Impact of COVID-19 on Uptake of Innovations



DEEP DIVE

CGM, insulin pump players look to 2021 as watershed year for diabetes wearables market

Insulet, Dexcom and Medtronic have product launches planned this year, looking to capitalize on the recent skyrocketing of virtual care due to the coronavirus pandemic.

By Ricky Zipp

Published Jan. 29, 2021

02-08-21

As thousands of doctors' offices shutter, telehealth becomes a way of life

Virtual healthcare has exploded during the pandemic, while traditional primary care offices have closed at an extraordinary rate. Can telehealth really replace primary care as our health system's first line of defense?

Fast Company, February 8, 2021

Life After the COVID-19 Emergency

- **Reimbursement**

- Will uptake of innovations be sustained beyond the COVID public health emergency?
- Will reimbursements be extended as part of the public health emergency be made permanent?

- **Integration**

- Will new policy and practice support integration of products, services, and care models by clinicians addressing prevention and treatment of obesity and diabetes?

- **Equity**

- Will new policy and practice address widening disparities in health and health care among Americans of color?

- **Inflection point?**

- Will the increased burden of obesity and diabetes, and lessons learned from COVID response spark a transformation in prevention and treatment of obesity and diabetes?

THANKS FOR JOINING US!

For more information, please contact:

Tom Hubbard

Vice President of Policy Research

NEHI

thubbard@nehi.net

APPENDIX

